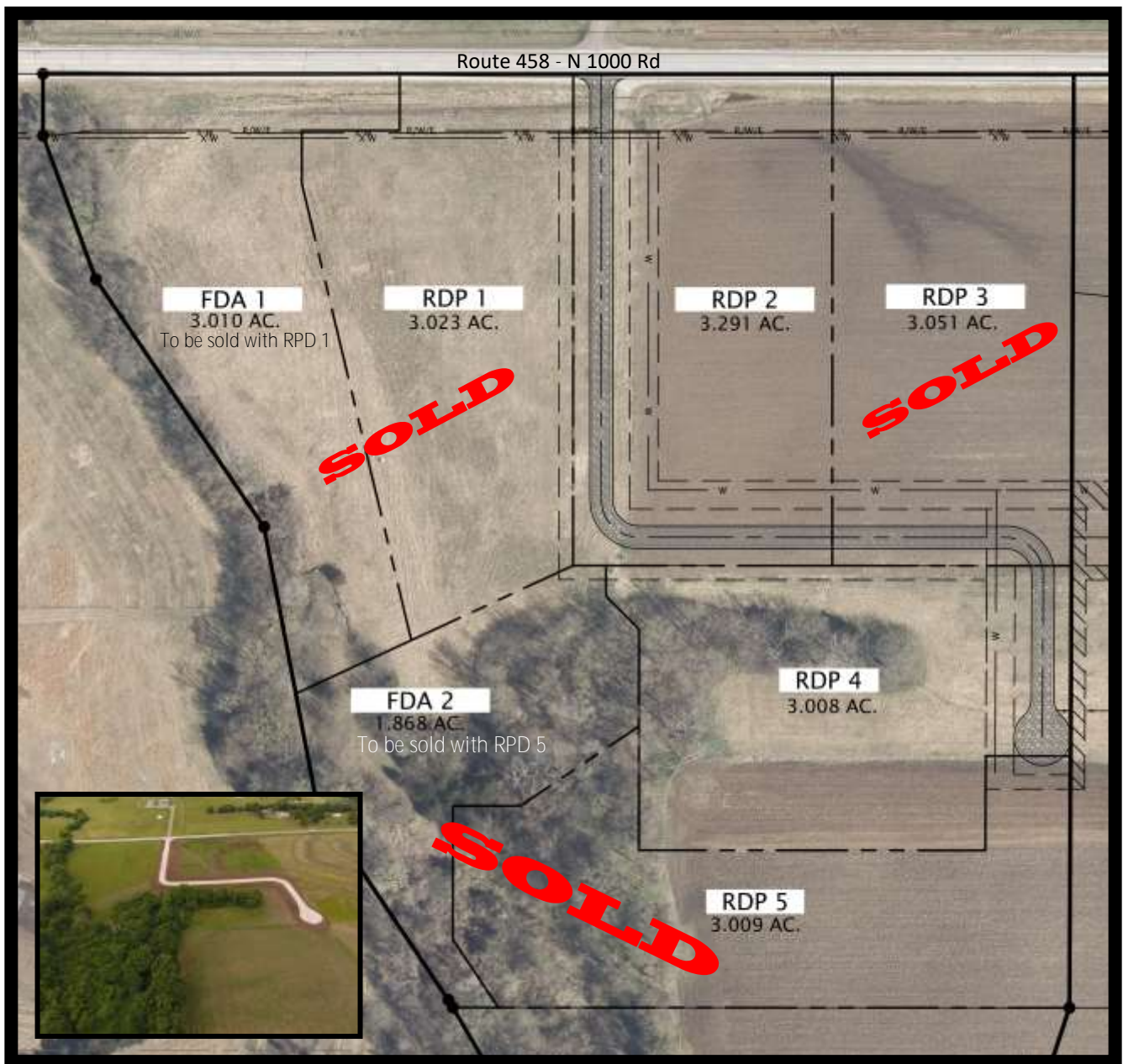


Overlook Estates

Phase II



Lots for Sale:

- RDP 1 & FDA 1 6.033 Acres SOLD
- RDP 2 3.291 Acres \$59,900.00
- RDP 3 3.051 Acres SOLD
- RDP 4 4.876 Acres \$74,900.00
- RDP 5 & FDA 2 3.010 Acres SOLD

Visit www.FloryAndAssociates.com for additional information including Declaration of Easements, Covenants, Conditions & Restrictions.

1.5 miles East of HWY 59 on County Rd 458



1162 N 550 Rd, Baldwin City, KS 66006
www.FloryAndAssociates.com
 785.594.3125 Office

Jason Flory 785.979.2183
 Wendy Flory 785.979.2923
 Email: FloryAndAssociates@gmail.com