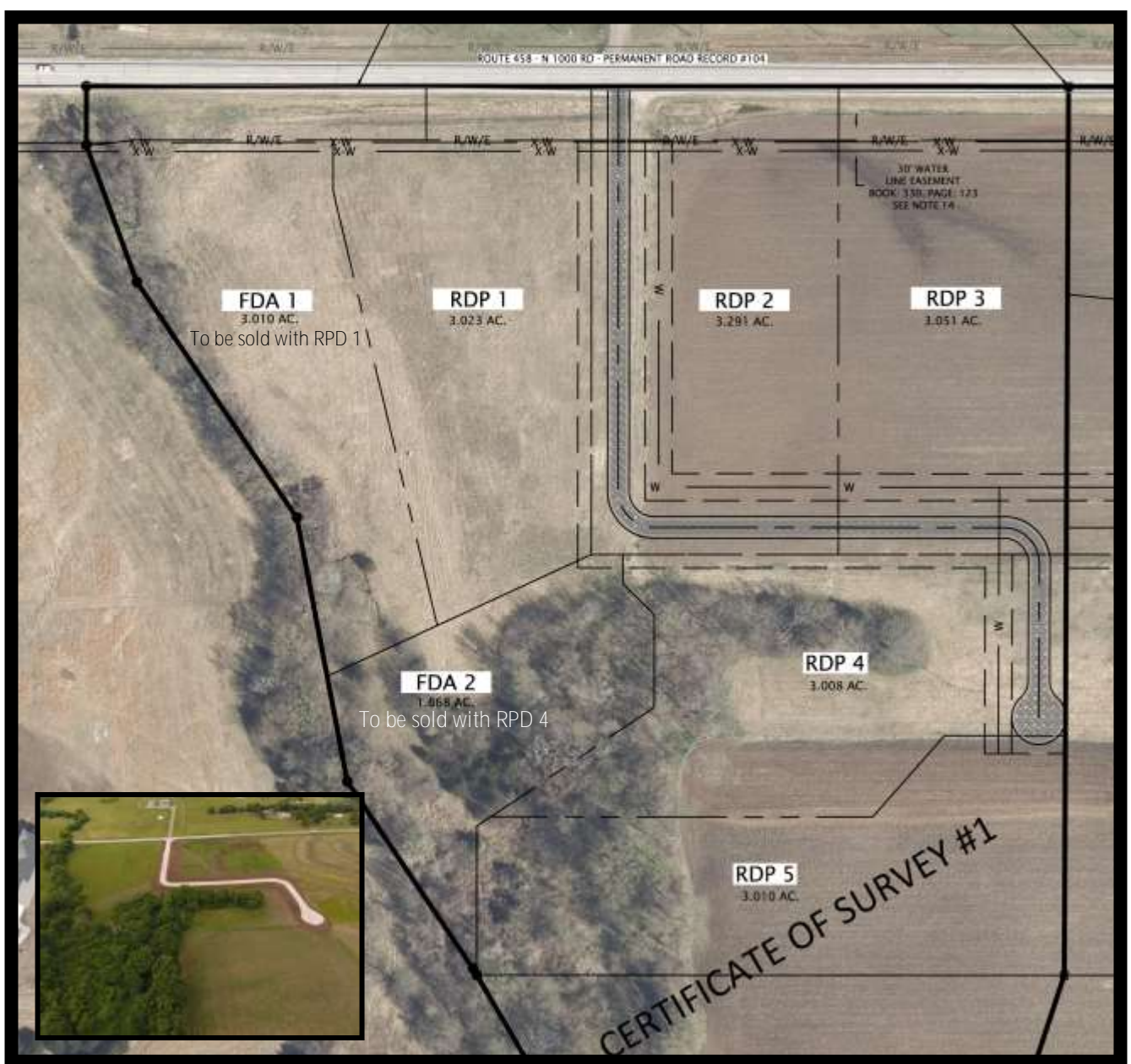


# Overlook Estates

Phase II



## Lots for Sale:

· RDP 1 & FDA 1	6.033 Acres	\$83,500.00
· RDP 2	3.291 Acres	\$59,900.00
· RDP 3	3.051 Acres	\$59,900.00
· RDP 4 & FDA 2	4.876 Acres	\$82,400.00
· RDP 5	3.010 Acres	\$74,900.00
	(add FDA 2 \$7,500 - total Acreage = 4.878)	
	total price	\$82,400.00

Visit [www.FloryAndAssociates.com](http://www.FloryAndAssociates.com) for additional information including Declaration of Easements, Covenants, Conditions & Restrictions.

1.5 miles East of HWY 59 on County Rd 458



1162 N 550 Rd, Baldwin City, KS 66006  
[www.FloryAndAssociates.com](http://www.FloryAndAssociates.com)  
 785.594.3125 Office

Jason Flory 785.979.2183  
 Wendy Flory 785.979.2923  
 Email: [FloryAndAssociates@gmail.com](mailto:FloryAndAssociates@gmail.com)