

**TALIAFERRO ANGUS FARMS**

**AND**

**T-BAR-T ANGUS RANCH**

*14<sup>TH</sup> Annual Production Sale*



**SATURDAY NOVEMBER 13 2021**

*TALIAFERRO ANGUS FARMS | EFFINGHAM, KANSAS*

# Welcome!

We would like to invite you to our 14th annual production sale on Saturday, November 13th!

We are proud of our genetics being offered and are confident we have a bull to fit your needs and budget. This year we have invited May-Way Farms to consign a few bulls to our offering, also with the same quality and guarantee as you are accustomed to. Come enjoy the day with good cattle, good fellowship, and good food.

Thank you for the interest in our programs and we hope to see you this November!

*Keith and Joe Taliaferro*





***SALE DATE & LOCATION***

**Saturday, November 13, 2021  
12:30 PM CST**

*Join us for a complimentary lunch prior to the sale!*

**Taliaferro Angus Farm  
4412 - 238<sup>TH</sup> Road  
Effingham, Kansas 66023**

***AUCTIONEER***

**Jason Flory 785-979-2183**

***SALE TERMS & CONDITIONS***

All animals must be paid for before they leave the farm. We will winter bulls free of charge until April 1, 2022. We just ask for 20% down payment sale day and the rest of payment due upon pickup/delivery. Bulls selling have all passed a breeding soundness examination.

Preferred for heifers to be picked up as soon as possible - other arrangements can be made if needed. Free delivery on all bulls and females.

***SUPPLEMENTAL INFORMATION***

Announcements from the auction block sale day take precedence over printed information. Catalog EPD's current as of October 10, 2021. For updates, please visit [www.angus.org](http://www.angus.org).

***CONTACTS***

**T-Bar-T Angus Ranch  
Keith Taliaferro  
913-370-0753  
[taliaferro@rainbowtel.net](mailto:taliaferro@rainbowtel.net)  
*Find us on Facebook!***

**Taliaferro Angus Farms  
Joe Taliaferro  
913-370-0571  
[taliaferrojoe@yahoo.com](mailto:taliaferrojoe@yahoo.com)**

# 1 T BAR T STUNNER 25H

DOB: 01/15/2020 REG: 19915466 BRAND: 25H

LD CAPITALIST 316  
MUSGRAVE 316 STUNNER  
MCATL BLACKBIRD 831-1378

CONNEALY CAPITALIST 028  
LD DIXIE ERICA 2053  
MCATL PURE PRODUCT 903-55  
MCATL BLACKBIRD 1378-573  
RITO 707 OF IDEAL 3407 7075  
S A V BLACKCAP MAY 4136  
SITZ UPWARD 307R  
T BART RITA 221T

S A V RESOURCE 1441  
T BART RITA 79D  
T BART RITA 56A

CED	BW	WW	YW	RADG	DMI	YH	SC	DOC
4	1.0	75	129	0.22	1.91	0.6	2.07	25

HP	CEM	MILK	MW	MH	\$EN	CW	MARB	RE	FAT
9.8	6	22	86	0.9	-28	69	0.32	0.69	0.023

Son of the popular LD Capitalist son Stunner. He is moderate birth weight with plenty of grow.

\$M
56
\$W
75
\$F
109
\$G
36
\$B
145
\$C
244



# 2 TAF ASHLAND 035

DOB: 01/24/2020 REG: 19803884 BRAND: 035

GAR EARLY BIRD  
GAR ASHLAND  
CHAIR ROCK AMBUSH 1018

GAR DAYLIGHT  
GAR PROGRESS 830  
B/R AMBUSH 28  
GAR YIELD GRADE N366  
MCC DAYBREAK  
QHF BLACKCAP 6E2 OF4V16 4355  
R B ACTIVE DUTY 010  
BANDO ROYAL LADY

QUAKER HILL RAMPAGE  
TAF ROYAL LADY 736  
ROYAL LADY 511

CED	BW	WW	YW	RADG	DMI	YH	SC	DOC
5	2.2	72	118	0.23	0.75	0.7	-0.26	8

HP	CEM	MILK	MW	MH	\$EN	CW	MARB	RE	FAT
13.2	6	22	86	0.5	-23	53	0.71	1.01	0.006

Cow bull that will help increase WW & YW. His \$B is in the top 25% at +154 and his \$C is also in the top 25% at +262.

\$M
62
\$W
81
\$F
96
\$G
59
\$B
154
\$C
262

# 4 TAF RESOURCE 045

DOB: 01/31/2020 REG: 19803800 BRAND: 045

RITO 707 OF IDEAL 3407 7075  
S A V RESOURCE 1441  
S A V BLACKCAP MAY 4136

R R RITO 707  
IDEAL 3407 OF 1418 076  
S A V TRAVELER 004  
S A V MAY 2397  
S A V FINAL ANSWER 0035  
S A V BLACKCAP MAY 5530  
S A V 004 PREDOMINANT 4438  
T A F LADY BOSS 436

S A V PRIORITY 7283  
TAF PRIORITY 331  
TAF PREDOM LADY 832

CED	BW	WW	YW	RADG	DMI	YH	SC	DOC
2	4.6	68	111	0.16	1.40	0.2	0.62	13

HP	CEM	MILK	MW	MH	\$EN	CW	MARB	RE	FAT
6.9	3	19	60	0.1	-14	40	-0.17	0.53	0.022

Cow bull with a WW in the top 25%.

\$M
54
\$W
56
\$F
74
\$G
13
\$B
86
\$C
166

# 3 TAF 18 MILLION 039

DOB: 01/27/2020 REG: 19803871 BRAND: 039

JINDRA ACCLAIM  
WHITESTONE 18-MILLION  
WHITESTONE EVERELDA 5109

JINDRA 3<sup>RD</sup> DIMENSION  
JINDRA BLACKBIRD LASSY 1111  
CONNEALY BLACK GRANITE  
WHITESTONE EVERELDA C059  
LCC NEW STANDARD  
B A LADY 6807 305  
S A V BISMARCK 5682  
TAF ROYAL LADY 900

R B ACTIVE DUTY 010  
TAF ROYAL LADY 714  
TAF ROYAL LADY 1219

CED	BW	WW	YW	RADG	DMI	YH	SC	DOC
5	4.7	77	128	0.24	1.32	0.7	1.53	11

HP	CEM	MILK	MW	MH	\$EN	CW	MARB	RE	FAT
16.3	9	26	85	0.9	-30	47	0.48	0.51	0.026

Cow bull with a top 10% WW at +77 and a YW that is in the top 15% of the breed at +128.

\$M
70
\$W
71
\$F
84
\$G
41
\$B
124
\$C
231

# 5 MAY-WAY ASHLAND 16H

DOB: 03/14/2020 REG: 19932175 TATTOO: 16H

GAR EARLY BIRD  
GAR ASHLAND  
CHAIR ROCK AMBUSH 1018

GAR DAYLIGHT  
GAR PROGRESS 830  
B/R AMBUSH 28  
GAR YIELD GRADE N366  
JINDRA 3RD DIMENSION  
JINDRA BLACKBIRD LASSY 1111  
MAY-WAY IMPROVEMENT 519  
MAY-WAY EMPRESS 715

JINDRA ACCLAIM  
MAY-WAY EMPRESS F30  
MAY-WAY EMPRESS 029

CED	BW	WW	YW	RADG	DMI	YH	SC	DOC
7	0.6	68	135	0.33	1.47	1.0	0.94	19

HP	CEM	MILK	MW	MH	\$EN	CW	MARB	RE	FAT
6.8	8	31	82	0.4	-28	57	0.95	0.91	-0.022

Another great Ashland son out of a beautiful Acclaim first calf heifer here. Top 3% RADG, top 4% \$B, top 10% YW, RE, \$F and \$G, top 15% \$C, marbling & milk. CAB Targeting the Brand qualifier and with a 66 pound actual birth weight, safe to use on heifers.

\$M
42
\$W
75
\$F
112
\$G
70
\$B
182
\$C
278

## 6 T BAR T GROWTH FUND 239H

DOB: 09/10/2020 REG: 20131329 BRAND: 239H

BASIN PAYWEIGHT 1682  
DEER VALLEY GROWTH FUND  
DEER VALLEY RITA 36113

BASIN PAYWEIGHT 0065  
21AR O LASS 7017  
PLATTEMERE WEIGH UP K360  
DEER VALLEY RITA 9457  
S AV NET WORTH 4200  
S AV DUKE GIRL 7348  
MYTTY IN FOCUS  
MYTTY MIDLAND R195

S AV FIRST CLASS 0207  
T BAR T MYTTY'S FIRST CLASS 228Z  
MYTTY'S MIDLAND 58T

CED	BW	WW	YW	RADG	DMI	YH	SC	DOC	\$M	
4	3.1	77	131	0.27	0.99	0.6	0.86	14	81	
HP	CEM	MILK	MW	MH	\$EN	CW	MARB	RE	FAT	\$W
13.8	12	31	64	0.6	-23	57	0.12	0.72	0.035	84
										\$F
										104
										\$G
										27
										\$B
										131
										\$C
										251

The first of the Deer Valley Growth Fund sons to be offered in the sale. Growth Fund has sired sale toppers all across America the last year. He will add pounds to your calves and milk to your replacement heifers.



## 7 T BAR T GROWTH FUND 229H

DOB: 09/07/2020 REG: 20131331 BRAND: 229H

BASIN PAYWEIGHT 1682  
DEER VALLEY GROWTH FUND  
DEER VALLEY RITA 36113

BASIN PAYWEIGHT 0065  
21AR O LASS 7017  
PLATTEMERE WEIGH UP K360  
DEER VALLEY RITA 9457  
S AV NET WORTH 4200  
S AV DUKE GIRL 7348  
MYTTY IN FOCUS  
MYTTY MIDLAND R195

S AV RESOURCE 1441  
T BAR T RITA 79D  
T BAR T RITA 56A

CED	BW	WW	YW	RADG	DMI	YH	SC	DOC	\$M	
6	2.0	75	127	0.24	1.01	0.5	1.20	24	66	
HP	CEM	MILK	MW	MH	\$EN	CW	MARB	RE	FAT	\$W
7.7	11	28	65	0.5	-22	53	0.44	0.44	0.059	82
										\$F
										91
										\$G
										35
										\$B
										126
										\$C
										229

Another great Growth Fund son.



## 8 T BAR T GROWTH FUND 216H

DOB: 08/26/2020 REG: 20131319 BRAND: 216H

BASIN PAYWEIGHT 1682  
DEER VALLEY GROWTH FUND  
DEER VALLEY RITA 36113

BASIN PAYWEIGHT 0065  
21AR O LASS 7017  
PLATTEMERE WEIGH UP K360  
DEER VALLEY RITA 9457  
RITO 707 OF IDEAL 3407 7075  
BR POLLY 8077-472  
BON VIEW NEW DESIGN 878  
T BAR T RITA 61M

S AV 707 RITO 9969  
T BAR T RITA 202A  
T BAR T RITA 70P

CED	BW	WW	YW	RADG	DMI	YH	SC	DOC	\$M	
4	1.0	70	133	0.31	1.42	0.4	0.62	21	69	
HP	CEM	MILK	MW	MH	\$EN	CW	MARB	RE	FAT	\$W
13.4	13	31	82	0.5	-31	60	0.05	0.77	0.019	77
										\$F
										110
										\$G
										26
										\$B
										136
										\$C
										245

Great growth numbers in this Growth Fund son!

# 9 T BAR T BLUEPRINT 217H

DOB: 08/26/2020 REG: PENDING BRAND: 217H

CONNEALY CONFIDENCE PLUS  
**WOODHILL BLUEPRINT**  
 WOODHILL EVERGREEN Z291-B233  
 DAMERON C-5 AMERICAN CLASSIC  
**T BAR T CLASSY LADY 228B**  
 T BART ROYAL LADY 230W

CONNEALY CONFIDENCE 0100  
 ELBANNA OF CONANGA 1209  
 TEHAMA SIERRA CUT Z118  
 WOODHILL EVERGREEN U6-Z291  
 EXG RS FIRST RATE S903 R3  
 DAMERON NORTHERN MISS 3114  
 S A V BISMARCK 5682  
 MARANDS ROYAL LADY 4066

CEM	BW	WW	YW	RADG	DMI	YH	SC	DOC	\$M	
n/a	n/a	n/a	n/a	n/a	n/a	n/a	n/a	n/a	n/a	
HP	CEM	MILK	MW	MH	\$EN	CW	MARB	RE	FAT	\$B
n/a	n/a	n/a	n/a	n/a	n/a	n/a	n/a	n/a	n/a	n/a
										\$C
										n/a

Look for updated EPD information on this great Blueprint son sale day!



# 10 TAF BLUE PRINT 2044

DOB: 09/16/2020 REG: 20135107 BRAND: 2044

CONNEALY CONFIDENCE PLUS  
**WOODHILL BLUEPRINT**  
 WOODHILL EVERGREEN Z291-B233  
 BOYD SIGNATURE 1014  
**TAF 1413-900**  
 TAF ROYAL LADY 900

CONNEALY CONFIDENCE 0100  
 ELBANNA OF CONANGA 1209  
 TEHAMA SIERRA CUT Z118  
 WOODHILL EVERGREEN U6-Z291  
 KESSLERS FRONTMAN R001  
 BOYD ERICA DIANNA 9054  
 S A V NET WORTH 4200  
 MARANDS ROYAL LADY 4101

CEM	BW	WW	YW	RADG	DMI	YH	SC	DOC	\$M	
1	4.3	79	137	0.27	1.40	0.5	0.58	7	55	
HP	CEM	MILK	MW	MH	\$EN	CW	MARB	RE	FAT	\$B
12.6	5	21	95	0.7	-32	59	0.30	0.79	0.026	138
										\$C
										234

Cow bull. This bull is thick with WW of +79 & YW of +137. That puts him in the top 10% for WW & YW.



# 11 TAF SOLUTION 2020

DOB: 08/29/2020 REG: 20134087 BRAND: 2020

KG SOLUTION 0018  
**TAF SOLUTION 1607**  
 TAF 1416-900  
 S A V SENSATION 5615  
**TAF SENSATION 1808**  
 S A C EMBLYNETTE 1783

MOGCK SURE SHOT  
 KG RITO LADY 8724  
 BOYD SIGNATURE 1014  
 TAF ROYAL LADY 900  
 S A V REGISTRY 2831  
 S A V BLACKCAP MAY 4136  
 S A V FINAL ANSWER 0035  
 S A V EMBLYNETTE 1180

CEM	BW	WW	YW	RADG	DMI	YH	SC	DOC	\$M	
5	1.7	62	112	n/a	n/a	n/a	n/a	n/a	68	
HP	CEM	MILK	MW	MH	\$EN	CW	MARB	RE	FAT	\$B
n/a	7	22	n/a	n/a	-20	n/a	n/a	n/a	n/a	55
										\$C
										87
										n/a
										n/a
										n/a

Lot 11 is out of my herd bull and a first calf heifer. He would be good to use on heifers or cows.



# 12 MAY-WAY CHARM 47H

DOB: 03/07/2020 REG: 19932049 TATTOO: 47H

SILVEIRAS CONVERSION 8064  
**BUBS SOUTHERN CHARM AA31**  
 HICKORY HILL ERICA 009

MAY-WAY EQUITY  
**MAY-WAY PRIMROSE E31**  
 MAY-WAY PRIMROSE 105

BT CROSSOVER 758N  
 EXG SARAS DREAM S093 R3  
 CONNEALY STIMULUS 8419  
 HICKORY HILL ERICA TA32  
 BARSTOW CASH  
 EXG PRIMROSE P054 R3  
 SAV BISMARCK 5682  
 MAY-WAY PRIMROSE 654

\$M
39
\$W
80
\$F
105
\$G
64
\$B
169
\$C
258

CED	BW	WW	YW	RADG	DMI	YH	SC	DOC
0	3.2	80	138	0.27	1.33	0.7	0.59	6

HP	CEM	MILK	MW	MH	\$EN	CW	MARB	RE	FAT
8.6	10	31	111	1.1	-45	62	0.93	0.72	0.011

Big growth numbers with lot 12. This great Southern Charm son comes from one of the most prominent cow families at May-Way. Top 5% WW, top 10% YW, \$B & \$W, top 15% marbling, milk, CW, \$F, \$G.



# 13 MAY-WAY CHARM 35H

DOB: 04/02/2020 REG: 19928442 TATTOO: 19H

SILVEIRAS CONVERSION 8064  
**BUBS SOUTHERN CHARM AA31**  
 HICKORY HILL ERICA 009

MAY-WAY EQUITY  
**MAY-WAY JILT E19**  
 MAY-WAY JILT 529

BT CROSSOVER 758N  
 EXG SARAS DREAM S093 R3  
 CONNEALY STIMULUS 8419  
 HICKORY HILL ERICA TA32  
 OCC EMBLAZON 854E  
 SH FOREVER LADY  
 MAY-WAY EAGLE EYE 104  
 MAY-WAY JILT 042

\$M
85
\$W
78
\$F
90
\$G
47
\$B
137
\$C
263

CED	BW	WW	YW	RADG	DMI	YH	SC	DOC
7	2.5	64	115	0.27	0.60	0.8	1.25	18

HP	CEM	MILK	MW	MH	\$EN	CW	MARB	RE	FAT
12.0	10	16	35	0.0	-7	42	0.57	0.67	0.022

A Southern Charm son that goes back to the great Jilt 042 donor at May-Way. Consistency is in this cow family and 35H proves that. Top 5% milk & \$M, top 15% \$W.



# 14 T BAR T INSIGHT 233H

DOB: 09/08/2020 REG: 20131035 BRAND: 233H

S A V BRILLIANCE 8077  
**PVF INSIGHT 0129**  
 PVF MISSIE 790

S A V RESOURCE 1441  
**JANSSEN MADAME PRIDE 4514**  
 S A V MADAME PRIDE 1282

SAV BISMARCK 5682  
 S A V BLACKCAP MAY 5270  
 PVF NEW HORIZON 001  
 PVF MISS RAPTOR 024  
 RITO 707 OF IDEAL 3407 7075  
 S A V BLACKCAP MAY 4136  
 S A V IRON MOUNTAIN 8066  
 S A V MADAME PRIDE 9307

\$M
41
\$W
59
\$F
126
\$G
30
\$B
156
\$C
243

CED	BW	WW	YW	RADG	DMI	YH	SC	DOC
-6	5.9	79	142	0.32	1.21	0.9	0.71	13

HP	CEM	MILK	MW	MH	\$EN	CW	MARB	RE	FAT
7.8	-4	20	95	0.8	-31	70	-0.08	1.20	-0.039

The first of three flush brothers by Insight out of our proven donor cow, Janssen Madame Pride 4514. To add pounds to your calf crop and good looks — don't overlook these bulls!



# 15 T BAR T INSIGHT 241H

DOB: 09/10/2020 REG: 20131032 BRAND: 241H

S A V BRILLIANCE 8077  
**PVF INSIGHT 0129**  
 PVF MISSIE 790  
  
 S A V RESOURCE 1441  
**JANSSEN MADAME PRIDE 4514**  
 S A V MADAME PRIDE 1282

S A V BISMARCK 5682  
 S A V BLACKCAP MAY 5270  
 PVF NEW HORIZON 001  
 PVF MISS RAPTOR 024  
 RITO 707 OF IDEAL 3407 7075  
 S A V BLACKCAP MAY 4136  
 S A V IRON MOUNTAIN 8066  
 S A V MADAME PRIDE 9307

CED	BW	WW	YW	RADG	DMI	YH	SC	DOC	\$M
0	4.6	76	130	0.31	0.66	0.4	0.69	12	41
HP	CEM	MILK	MW	MH	\$EN	CW	MARB	RE	FAT
10.2	3	16	104	0.5	-33	67	-0.04	1.56	-0.049
\$B	\$W	\$F	\$G	\$S	\$C	\$B	\$C	\$B	\$C
160	55	122	37	160	160	160	160	160	160
249	249	249	249	249	249	249	249	249	249

Flush brother by Insight out of our proven donor cow, Janssen Madame Pride 4514. To add pounds to your calf crop and good looks — don't overlook these bulls!



S A V MADAME PRIDE 1282: Dam of T Bar T donor dam, Janssen Madame Pride 4514, and maternal granddam to flush brothers & lots 14-16.

# 16 T BAR T INSIGHT 246H

DOB: 09/15/2020 REG: 20131037 BRAND: 246H

S A V BRILLIANCE 8077  
**PVF INSIGHT 0129**  
 PVF MISSIE 790  
  
 S A V RESOURCE 1441  
**JANSSEN MADAME PRIDE 4514**  
 S A V MADAME PRIDE 1282

S A V BISMARCK 5682  
 S A V BLACKCAP MAY 5270  
 PVF NEW HORIZON 001  
 PVF MISS RAPTOR 024  
 RITO 707 OF IDEAL 3407 7075  
 S A V BLACKCAP MAY 4136  
 S A V IRON MOUNTAIN 8066  
 S A V MADAME PRIDE 9307

CED	BW	WW	YW	RADG	DMI	YH	SC	DOC	\$M
3	2.9	64	123	0.31	1.14	0.5	0.78	31	36
HP	CEM	MILK	MW	MH	\$EN	CW	MARB	RE	FAT
7.9	3	22	86	0.4	-28	63	-0.21	1.33	-0.036
\$B	\$W	\$F	\$G	\$S	\$C	\$B	\$C	\$B	\$C
148	54	122	26	148	148	148	148	148	148
228	228	228	228	228	228	228	228	228	228

Flush brother by Insight out of our proven donor cow, Janssen Madame Pride 4514.



# 17 TAF JUSTIFIED 2003

DOB: 08/08/2020 REG: 20136230 BRAND: 2003

CONNEALY JUDGEMENT  
**KG JUSTIFIED 3023**  
 KG MISS MAGIC 1443  
  
 CONNEALY BLACK GRANITE  
**TAF 1814**  
 S A C EMBLYNETTE 1783

CONNEALY CONSENSUS 7229  
 ENTRINE OF CONANGA 9876  
 SITZ WISDOM 481T  
 KG MISS MAGIC 3528  
 CONNEALY CONSENSUS 7229  
 EURA ELGA OF CONANGA 9109  
 S A V FINAL ANSWER 0035  
 S A V EMBLYNETTE 1180

CED	BW	WW	YW	RADG	DMI	YH	SC	DOC	\$M
8	-0.8	61	98	0.21	0.18	0.1	1.53	18	74
HP	CEM	MILK	MW	MH	\$EN	CW	MARB	RE	FAT
13.8	6	30	51	-0.2	-16	29	0.77	0.44	0.050
\$B	\$W	\$F	\$G	\$S	\$C	\$B	\$C	\$B	\$C
120	76	69	51	120	120	120	120	120	120
230	230	230	230	230	230	230	230	230	230

Heifer Bull.

# 18 TAF JUSTIFIED 2004

DOB: 08/10/2020 REG: 20136228 BRAND: 2004

CONNEALY JUDGEMENT  
**KG JUSTIFIED 3023**  
 KG MISS MAGIC 1443  
  
 CONNEALY BLACK GRANITE  
**TAF 1814**  
 S A C EMBLYNETTE 1783

CONNEALY CONSENSUS 7229  
 ENTRINE OF CONANGA 9876  
 SITZ WISDOM 481T  
 KG MISS MAGIC 3528  
 CONNEALY CONSENSUS 7229  
 EURA ELGA OF CONANGA 9109  
 S A V FINAL ANSWER 0035  
 S A V EMBLYNETTE 1180

CED	BW	WW	YW	RADG	DMI	YH	SC	DOC	\$M
9	0.2	63	109	n/a	n/a	n/a	n/a	n/a	n/a
HP	CEM	MILK	MW	MH	\$EN	CW	MARB	RE	FAT
n/a	10	28	n/a	n/a	n/a	n/a	n/a	n/a	n/a
\$B	\$W	\$F	\$G	\$S	\$C	\$B	\$C	\$B	\$C
n/a	n/a	n/a	n/a	n/a	n/a	n/a	n/a	n/a	n/a
n/a	n/a	n/a	n/a	n/a	n/a	n/a	n/a	n/a	n/a

Bull to use on your heifers. Top 30% for CED & BW and is still over 100 for YW.



# 19 MAY-WAY STUNNER 29H

DOB: 04/15/2020 REG: 19928429 TATTOO: 29H

LD CAPITALIST 316  
**MUSGRAVE 316 STUNNER**  
 MCATL BLACKBIRD 831-1378  
  
 MAY-WAY INCEPTION  
**MAY-WAY JILT F08**  
 MAY-WAY JILT 1545

CONNELLY CAPITALIST 028  
 LD DIXIE ERICA 2053  
 MCATL PURE PRODUCT 903-55  
 MCATL BLACKBIRD 1378-573  
 PVF INSIGHT 0129  
 MAY-WAY EMPRESS 029  
 MAY-WAY PERFECTION 384  
 MAY-WAY JILT 1383

CED	BW	WW	YW	RADG	DMI	YH	SC	DOC	\$M	
9	-0.4	59	98	0.21	0.40	0	0.73	11	45	
HP	CEM	MILK	MW	MH	\$EN	CW	MARB	RE	FAT	\$W
10.6	9	32	28	0	-7	47	0.78	0.63	0.068	77
										\$F
										100
										\$G
										52
										\$B
										152
										\$C
										262

Calving ease genetics are stacked in this bulls pedigree! Top 15% milk & \$W, top 20% \$F & BW, top 25% \$B & \$C, and top 30% marbling at 0.78.



# 20 T BAR T GROWTH FUND 218H

DOB: 08/26/2020 REG: 20134018 BRAND: 218H

BASIN PAYWEIGHT 1682  
**DEER VALLEY GROWTH FUND**  
 DEER VALLEY RITA 36113

BASIN PAYWEIGHT 0065  
 21AR O LASS 7017  
 PLATTEMERE WEIGH UP K360  
 DEER VALLEY RITA 9457  
 S A V REGISTRY 2831  
 S A V BLACKCAP MAY 4136  
 S A V FIRST CLASS 0207  
 T BART ROYAL LADY 230W

S A V SENSATION 5615  
**T BART LADY 200E**  
 T BART ROYAL LADY 225B

CED	BW	WW	YW	RADG	DMI	YH	SC	DOC	\$M	
4	2.6	73	136	n/a	n/a	n/a	n/a	n/a	60	
HP	CEM	MILK	MW	MH	\$EN	CW	MARB	RE	FAT	\$W
n/a	10	26	n/a	n/a	-35	n/a	n/a	n/a	n/a	65
										\$F
										100
										\$G
										n/a
										\$B
										n/a
										\$C
										n/a

Here is another Growth Fund son. Look at him for added pounds to your calf crop.



# 21 T BAR T DYNAMIC 215H

DOB: 08/25/2020 REG: 20131043 BRAND: 215H

CONNELLY BLACK GRANITE  
**BOYD DYNAMIC 6118**  
 BOYD ROSETTA 4300

CONNELLY CONSENSUS 7229  
 EURA ELGA OF CONANGA 9109  
 EXAR DENVER 2002B  
 S A V ROSETTA 9123  
 S A V IRON MOUNTAIN 8066  
 S A V MAY 2397  
 S A V FIRST CLASS 0207  
 T BART ROYAL LADY 230W

S A V ANGUS VALLEY 1867  
**T BART LADY 226D**  
 T BART ROYAL LADY 225B

CED	BW	WW	YW	RADG	DMI	YH	SC	DOC	\$M	
10	2.0	70	135	0.33	0.93	0.8	1.03	15	28	
HP	CEM	MILK	MW	MH	\$EN	CW	MARB	RE	FAT	\$W
2.8	10	30	91	0.6	-35	63	0.87	0.35	0.039	72
										\$F
										119
										\$G
										55
										\$B
										174
										\$C
										254

These Boyd Dynamic sons will add maternal traits to your heifers and pounds to the calf crop.



## 22 T BAR T DYNAMIC 236H

DOB: 09/09/2020 REG: 20131049 BRAND: 236H

CONNEALY BLACK GRANITE  
BOYD DYNAMIC 6118  
BOYD ROSETTA 4300

S A V FIRST CLASS 0207  
T BAR T ROYAL CLASS 214B  
T BART ROYAL LADY 230W

CONNEALY CONSENSUS 7229  
EURA ELGA OF CONANGA 9109  
EXAR DENVER 2002B  
S A V ROSETTA 9123  
S A V NET WORTH 4200  
S A V DUKE GIRL 7348  
S A V BISMARCK 5682  
MARANDS ROYAL LADY 4066

CED	BW	WW	YW	RADG	DMI	YH	SC	DOC
4	3.4	68	112	0.22	0.71	0.5	0.97	18

HP	CEM	MILK	MW	MH	\$EN	CW	MARB	RE	FAT
5.8	8	33	75	0.3	-29	57	0.54	0.62	0.048

\$M
46
\$W
74
\$F
103
\$G
43
\$B
146
\$C
235

## 25 TAF DYNAMIC 2035

DOB: 09/09/2020 REG: 20136020 BRAND: 2035

CONNEALY BLACK GRANITE  
BOYD DYNAMIC 6118  
BOYD ROSETTA 4300

K C F BENNETT ABSOLUTE  
TAF ABSOLUTE 1710  
TAF 1411-900

CONNEALY CONSENSUS 7229  
EURA ELGA OF CONANGA 9109  
EXAR DENVER 2002B  
S A V ROSETTA 9123  
S A V FINAL ANSWER 0035  
THOMAS MISS LUCY 5152  
BOYD SIGNATURE 1014  
TAF ROYAL LADY 900

CED	BW	WW	YW	RADG	DMI	YH	SC	DOC
11	2.2	76	122	0.24	0.58	0.3	0.97	9

HP	CEM	MILK	MW	MH	\$EN	CW	MARB	RE	FAT
7.6	12	34	52	0.1	-19	60	0.47	0.71	0.029

\$M
67
\$W
92
\$F
101
\$G
42
\$B
144
\$C
254

If you are needing to get more milk in your cows these Dynamic sons will help with that. This bull has a +34 for milk.

## 23 TAF JUSTIFIED 2005

DOB: 08/10/2020 REG: 20136231 BRAND: 2005

CONNEALY JUDGEMENT  
KG JUSTIFIED 3023  
KG MISS MAGIC 1443

CONNEALY BLACK GRANITE  
TAF 1805  
S A C EMBLYNETTE 1783

CONNEALY CONSENSUS 7229  
ENTRINE OF CONANGA 9876  
SITZ WISDOM 481T  
KG MISS MAGIC 3528  
CONNEALY CONSENSUS 7229  
EURA ELGA OF CONANGA 9109  
S A V FINAL ANSWER 0035  
S A V EMBLYNETTE 1180

CED	BW	WW	YW	RADG	DMI	YH	SC	DOC
10	-0.1	62	108	n/a	n/a	n/a	n/a	n/a

HP	CEM	MILK	MW	MH	\$EN	CW	MARB	RE	FAT
n/a	10	28	n/a	n/a	n/a	n/a	n/a	n/a	n/a

\$M
n/a
\$W
67
\$F
n/a
\$G
n/a
\$B
n/a
\$C
n/a

Here is a heifer bull with a +10 CED and a -0.1 BW.



## 24 TAF DYNAMIC 2036

DOB: 09/10/2020 REG: 20136099 BRAND: 2036

CONNEALY BLACK GRANITE  
BOYD DYNAMIC 6118  
BOYD ROSETTA 4300

BOYD SIGNATURE 1014  
TAF 1411-900  
TAF ROYAL LADY 900

CONNEALY CONSENSUS 7229  
EURA ELGA OF CONANGA 9109  
EXAR DENVER 2002B  
S A V ROSETTA 9123  
KESSLERS FRONTMAN R001  
BOYD ERICA DIANNA  
S A V NET WORTH 4200  
MARANDS ROYAL LADY 4101

CED	BW	WW	YW	RADG	DMI	YH	SC	DOC
11	2.0	63	112	0.25	0.65	0.6	1.43	24

HP	CEM	MILK	MW	MH	\$EN	CW	MARB	RE	FAT
4.5	12	35	61	0.2	-24	53	0.50	0.63	0.044

\$M
47
\$W
75
\$F
102
\$G
42
\$B
144
\$C
234

Use this bull on heifers or cows with a top 15% CED of +11. Also has a +112 YW.



## 26 MAY-WAY TURNING POINT 19H

DOB: 04/02/2020 REG: 19928442 TATTOO: 19H

PLATTEMERE WEIGH UP K360  
STEVENS TURNING POINT  
STEVENS PRIDE I167X

MAY-WAY EQUITY  
MAY-WAY JILT F10  
MAY-WAY JILT 360

SITZ UPWARD 307R  
BARBARA OF PLATTEMERE 337  
SAV BISMARCK  
FSHK PRIDE 180  
BARSTOW CASH  
EXG PRIMROSE P054 R3  
MAY-WAY ROCKETMAN  
MAY-WAY JILT 042

\$M
59
\$W
62
\$F
85
\$G
45
\$B
130
\$C
228

CED	BW	WW	YW	RADG	DMI	YH	SC	DOC
11	-0.9	62	100	0.23	0.17	0.3	0.30	9

HP	CEM	MILK	MW	MH	\$EN	CW	MARB	RE	FAT
10.1	11	16	32	0.0	0	36	0.46	0.80	0.006

Big time heifer bull here out of a beautiful Equity first calf heifer!



## 27 T BAR T BLUE PRINT 227H

DOB: 09/06/2020 REG: 20131130 BRAND: 227H

CONNEALY CONFIDENCE PLUS  
WOODHILL BLUEPRINT  
WOODHILL EVERGREEN Z291-B233

SAV FIRST CLASS 0207  
T BAR T ROYAL LADY 226B  
T BAR T ROYAL LADY 230W

CONNEALY CONFIDENCE 0100  
ELBANNA OF CONANGA 1209  
TEHAMA SIERRA CUT Z118  
WOODHILL EVERGREEN U6-Z291  
SAV NET WORTH 4200  
SAV DUKE GIRL 7348  
SAV BISMARCK 5682  
MARANDS ROYAL LADY 4066

\$M
61
\$W
78
\$F
97
\$G
54
\$B
151
\$C
257

CED	BW	WW	YW	RADG	DMI	YH	SC	DOC
11	0.1	60	110	0.26	0.98	0.4	0.46	26

HP	CEM	MILK	MW	MH	\$EN	CW	MARB	RE	FAT
7.9	8	37	50	0.3	-20	50	0.53	1.15	-0.013

This Blueprint son checks all the boxes — low birth weight, good yearling weight and extra milk.



## 28 T BAR T RAINDANCE 235H

DOB: 09/10/2020 REG: 20132787 BRAND: 235H

COLEMAN CHARLO 0256  
SAV RAINDANCE 6848  
SAV BLACKCAP MAY 4136

SAV TEN SPEED 3022  
MADAME PRIDE 5065  
JANSSEN MADAME PRIDE 4514

O C C PAXTON 730P  
BOHI ABIGALE 6014  
SAV 8180 TRAVELER 004  
SAV MAY 2397  
AARTEN X 7008 SA  
SAV MADAME PRIDE 1134  
SAV RESOURCE 1441  
SAV MADAME PRIDE 1282

\$M
37
\$W
52
\$F
78
\$G
48
\$B
126
\$C
200

CED	BW	WW	YW	RADG	DMI	YH	SC	DOC
3	3.2	67	126	0.28	1.47	0.8	1.26	19

HP	CEM	MILK	MW	MH	\$EN	CW	MARB	RE	FAT
9.1	7	18	80	0.8	-23	36	0.46	0.97	-0.010

Son of the popular SAV Raindance. An excellent cow bull with added growth and docility.



## 29 T BAR T JUSTIFIED 207H

DOB: 08/11/2020 REG: 20131020 BRAND: 207H

CONNEALY JUDGMENT  
KG JUSTIFIED 3023  
KG MISS MAGIC 1443

S A V REIGN 6845  
T BAR T LADT226F  
T BAR T ROYAL LADY 226B

CONNEALY CONSENSUS 7229  
ENTRINE OF CONANGA 9876  
SITZ WISDOM 481T  
KG MISS MAGIC 3528  
COLEMAN CHARLO 0256  
S A V BLACKCAP MAY 4136  
S A V FIRST CLASS 0207  
T BAR T ROYAL LADY 230W

CED	BW	WW	YW	RADG	DMI	YH	SC	DOC	\$M	
6	0.6	60	107	0.21	1.24	-0.1	1.65	20	88	
HP	CEM	MILK	MW	MH	\$EN	CW	MARB	RE	FAT	\$W
13.2	8	37	35	-0.4	-13	22	0.30	0.41	0.015	81
										\$F
										49
										\$G
										32
										\$B
										81
										\$C
										193

These sons of KG Justified should make excellent heifer bulls and still maintain maternal traits.

## 30 T BAR T JUSTIFIED 204H

DOB: 08/04/2020 REG: 20131262 BRAND: 204H

CONNEALY JUDGMENT  
KG JUSTIFIED 3023  
KG MISS MAGIC 1443

HA RELEVANT 6022  
T BAR T ROYAL LADY 230F  
T BAR T ROYAL LADY 230W

CONNEALY CONSENSUS 7229  
ENTRINE OF CONANGA 9876  
SITZ WISDOM 481T  
KG MISS MAGIC 3528  
HA OUTSIDE 3008  
HA BLACKCAP LADY 0855  
S A V BISMARCK 5682  
MARANDS ROYAL LADY 4066

CED	BW	WW	YW	RADG	DMI	YH	SC	DOC	\$M	
11	-0.9	51	87	0.17	0.77	-0.4	0.41	8	82	
HP	CEM	MILK	MW	MH	\$EN	CW	MARB	RE	FAT	\$W
12.0	11	25	5	-0.5	8	26	0.79	0.49	0.053	63
										\$F
										66
										\$G
										52
										\$B
										118
										\$C
										235

## 32 T BAR T JUSTIFIED 211H

DOB: 08/15/2020 REG: 20134008 BRAND: 211H

CONNEALY JUDGMENT  
KG JUSTIFIED 3023  
KG MISS MAGIC 1443

EXAR SIGNIFICANT 1969B  
T BAR T BLACKCAP MAY 223 C  
S A V BLACKCAP MAY 7744

CONNEALY CONSENSUS 7229  
ENTRINE OF CONANGA 9876  
SITZ WISDOM 481T  
KG MISS MAGIC 3528  
CONNEALY CONSENSUS 7229  
SITZ HENRIETTA PRIDE 643T  
S A V 8180 TRAVELER 004  
S A V BLACKCAP MAY 4546

CED	BW	WW	YW	RADG	DMI	YH	SC	DOC	\$M	
8	-0.7	52	92	n/a	n/a	n/a	n/a	n/a	74	
HP	CEM	MILK	MW	MH	\$EN	CW	MARB	RE	FAT	\$W
n/a	7	27	n/a	n/a	-5	n/a	n/a	n/a	n/a	57
										\$F
										74
										\$G
										n/a
										\$B
										n/a
										\$C
										n/a

## 33 T BAR T JUSTIFIED 201H

DOB: 08/01/2020 REG: 20134009 BRAND: 201H

CONNEALY JUDGMENT  
KG JUSTIFIED 3023  
KG MISS MAGIC 1443

PVF INSIGHT 0129  
T BAR T CLAIR 213C  
T BAR T CLAIRE 232Z

CONNEALY CONSENSUS 7229  
ENTRINE OF CONANGA 9876  
SITZ WISDOM 481T  
KG MISS MAGIC 3528  
S A V BRILLIANCE  
PVF MISSIE 790  
S A V FIRST CLASS 0207  
MYTTY'S MIDLAND 58T

CED	BW	WW	YW	RADG	DMI	YH	SC	DOC	\$M	
11	-1.4	54	95	n/a	n/a	n/a	n/a	n/a	n/a	
HP	CEM	MILK	MW	MH	\$EN	CW	MARB	RE	FAT	\$W
n/a	9	30	n/a	n/a	n/a	n/a	n/a	n/a	n/a	63
										\$F
										n/a
										\$G
										n/a
										\$B
										n/a
										\$C
										n/a

## 31 MAY-WAY INCEPTION 41H

DOB: 04/14/2020 REG: 19973442 TATTOO: 41H

PVF INSIGHT  
MAY-WAY INCEPTION 665  
MAY-WAY EMPRESS 029

MAY-WAY EQUITY  
MAY-WAY LADY F49  
TOPLINE LADY 9115

SAV BRILLIANCE 8077  
PVF MISSIE 790  
MAY-WAY IMPROVEMENT 519  
MAY-WAY EMPRESS 715  
BARSTOW CASH  
EXG PRIMROSE P054 R3  
B C LOOKOUT 7024  
GAMBLES LADY 959

CED	BW	WW	YW	RADG	DMI	YH	SC	DOC	\$M	
5	2.2	67	122	0.27	1.13	0.6	1.59	7	24	
HP	CEM	MILK	MW	MH	\$EN	CW	MARB	RE	FAT	\$W
5.1	8	19	98	0.7	-32	37	0.03	1.08	-0.029	56
										\$F
										82
										\$G
										32
										\$B
										115
										\$C
										173

The Inception sons were the high selling sire group in the spring 2021 May-Way Production sale. This bull is out of a beautifully built Equity daughter who had a very successful show career and goes back to the great Lady 9115 donor. Lot 31 not only has a ton of look but he ranks in the top 3% of the breed for Ribeye.



Lot 33

## **34-43 TAF BRED HEIFERS**

SPRING BRED HEIFERS

*TAF Spring bred heifers. AI bred to TAF Quantum 1925 between 5/23/21 and 6/02/21. Ran cleanup with an Ashland son. Preg checked on 8/21/21.*

## **44-63 T BAR T BRED HEIFERS**

SPRING BRED HEIFERS

*T Bar T Spring bred heifers. AI bred to Brickyard 6/10/21. Ran with cleanup bull, T Bar T Success 215G, until 9/15/21.*



# Reference Sires

## BOYD DYNAMIC 6118

DOB: 09/02/2016 REG: 18693344 TATTOO: 6118

CONNEALY CONSENSUS 7229										CONNEALY CONSENSUS	\$M
CONNEALY BLACK GRANITE										BLUE LILLY OF CONANGA 16	51
EURA ELGA OF CONANGA 9109										S A V BISMARCK 5682	\$W
EXAR DENVER 2002B										EURA CAL OF CONANGA 56B	87
BOYD ROSETTA 4300										EXAR UPSHOT 0562B	\$F
S A V ROSETTA 9123										EXAR ROYAL LASS 1067	119
										S A V PROVIDENCE 6922	\$G
										S A V ROSETTA 6442	51
CED	BW	WW	YW	RADG	DMI	YH	SC	DOC		\$B	170
14	0.9	78	134	0.29	0.86	0.6	1.19	28		\$C	271
HP	CEM	MILK	MW	MH	\$EN	CW	MARB	RE	FAT		
4.9	16	30	92	0.5	-36	72	0.67	0.62	0.044		



## DEER VALLEY GROWTH FUND

DOB: 01/22/2017 REG: 18827828 TATTOO: 71122

BASIN PAYWEIGHT 006S										VERMILION PAYWEIGHT J847	\$M
BASIN PAYWEIGHT 1682										BASIN LUCY 3829	76
21AR O LASS 7017										HARB PENDLETON 765 J H	\$W
										21AR O LASS F24A	93
PLATTEMERE WEIGH UP K360										SITZ UPWARD 307R	\$F
DEER VALLEY RITA 36113										BARBARA OF PLATTEMERE 337	134
DEER VALLEY RITA 9457										G A R NEW DESIGN 5050	\$G
										G A R EXT 614	43
CED	BW	WW	YW	RADG	DMI	YH	SC	DOC		\$B	177
9	1.2	93	175	0.36	2.22	0.7	0.85	30		\$C	306
HP	CEM	MILK	MW	MH	\$EN	CW	MARB	RE	FAT		
13.8	16	29	129	0.9	-52	80	0.51	0.71	0.045		



## GAR ASHLAND

DOB: 01/31/2015 REG: 19217198 TATTOO: K25

G A R DAYLIGHT										MCC DAYBREAK	\$M
G A R EARLY BIRD										G A R OBJECTIVE R227	59
G A R PROGRESS 830										G A R PROGRESS	\$W
										G A R 111 RITO 3346	79
B / R AMBUSH 28										ROCKN D AMBUSH 1531	\$F
CHAIR ROCK AMBUSH 1018										B / R RUBY OF TIFFANY 8250	91
G A R YIELD GRADE N366										G A R YIELD GRADE	\$G
										G A R 1407 NEW DESIGN 1942	86
CED	BW	WW	YW	RADG	DMI	YH	SC	DOC		\$B	177
15	0.1	79	138	0.28	1.51	0.6	0.77	29		\$C	289
HP	CEM	MILK	MW	MH	\$EN	CW	MARB	RE	FAT		
10.2	14	22	83	0.4	-27	55	1.23	1.02	-0.011		



## KG JUSTIFIED 3023

DOB: 01/21/2013 REG: 17707279 TATTOO: 3023

CONNEALY CONSENSUS 7229  
**CONNEALY JUDGMENT**  
 ENTRINE OF CONANGA 9876

SITZ WISDOM 481T  
**KG MISS MAGIC 1443**  
 KC MISS MAGIC 3528

CONNEALY CONSENSUS  
 BLUE LILLY OF CONANGA 16  
 RITO 6EMA OF 4L3 EMBLAZON  
 ENTRANCE OF CONANGA 206  
 CONNEALY ONWARD  
 SITZ ELLUNA ELITE 94P  
 KG TRAVELER  
 KG MISS MAGIC 6560

CED	BW	WW	YW	RADG	DMI	YH	SC	DOC
10	-2.1	62	108	0.21	1.17	-0.1	1.73	23

HP	CEM	MILK	MW	MH	\$EN	CW	MARB	RE	FAT
16.4	8	29	25	-0.4	-4	31	1.03	0.28	0.048

\$M
98
\$W
87
\$F
69
\$G
60
\$B
129
\$C
265



## MUSGRAVE 316 STUNNER

DOB: 09/19/2016 REG: 18467508 TATTOO: 1646

CONNEALY CAPITALIST 028  
**LD CAPITALIST 316**  
 LD DIXIE ERICA 2053

MCATL PURE PRODUCT 903-55  
**MCATL BLACKBIRD 831-1378**  
 MCATL BLACKBIRD 1378-573

S A V FINAL ANSWER 0035  
 PRIDES PITA OF CONANGA 8821  
 CA FUTURE DIRECTION 5321  
 LD DIXIE ERICA OAR 0853  
 CONNEALY FINAL PRODUCT  
 MA ESTA 55-252  
 CONNEALY REFLECTION  
 MA BLACKBIRD 573

CED	BW	WW	YW	RADG	DMI	YH	SC	DOC
9	0.1	69	119	0.24	0.88	0.1	1.42	11

HP	CEM	MILK	MW	MH	\$EN	CW	MARB	RE	FAT
12.7	11	23	79	0.4	-26	57	0.72	0.40	0.076

\$M
56
\$W
70
\$F
108
\$G
47
\$B
156
\$C
258



## PVF INSIGHT 0129

DOB: 04/17/2010 REG: 16805884 BRAND: 0129

S A V BISMARCK 5682  
**S A V BRILLIANCE 8077**  
 S A V BLACKCAP MAY 5270

P V F NEW HORIZON 001  
**PVF MISSIE 790**  
 P V F MISS RAPTOR 024

G A R GRID MAKER  
 S A V ABIGALE 0451  
 S A V 8180 TRAVELER 004  
 S A V MAY 2420  
 B / R NEW DESIGN 323  
 HYLINE ELLEN 410  
 DAMERON PVF RAPTOR 702  
 P V F MISS STOCKMAN 812

CED	BW	WW	YW	RADG	DMI	YH	SC	DOC
4	2.1	61	107	0.29	0.16	0.3	0.45	19

HP	CEM	MILK	MW	MH	\$EN	CW	MARB	RE	FAT
6.9	7	23	64	0.1	-18	56	-0.11	1.40	-0.015

\$M
44
\$W
62
\$F
114
\$G
29
\$B
143
\$C
229



## S A V RAINDANCE 6848

DOB: 01/11/2016 REG: 18578965 BRAND: 6848

OCC PAXTON 730P  
**COLEMAN CHARLO 0256**  
 BOHI ABIGALE 6014

S A V 8180 TRAVELER 004  
**S A V BLACKCAP MAY 4136**  
 S A V MAY 2397

OCC FOCUS 813F  
 OCC BLACKBIRD 736K  
 SITZ TRAVELER 8180  
 S A V ABIGALE 6062  
 SITZ TRAVELER 8180  
 BOYD FOREVER LADY 8003  
 S A F 598 BANDO 5175  
 S A V MAY 7238

CED	BW	WW	YW	RADG	DMI	YH	SC	DOC
8	1.7	66	126	0.30	1.25	0	0.98	20

HP	CEM	MILK	MW	MH	\$EN	CW	MARB	RE	FAT
12.5	4	16	51	0	-9	42	-0.06	0.83	-0.01

\$M
53
\$W
55
\$F
84
\$G
24
\$B
108
\$C
193



## SAV RESOURCE 1441

DOB: 01/07/2011 REG: 17016597 TATTOO: 1441

R R RITO 707  
**RITO 707 OF IDEAL**  
 IDEAL 3407 OF 1418 076

SAV 8180 TRAVELER 004  
**SAV BLACKCAP MAY 4136**  
 SAV MAY 2397

RITO N BAR  
 ERISKAY OF ROLLIN ROCK 3  
 IDEAL 1418 OF 8103 4286  
 IDEAL 076 OF 692 8375  
 SITZ TRAVELER 8180  
 BOYD FOREVER LADY 8003  
 SA F 598 BANDO 5175  
 SAV MAY 7238

CED	BW	WW	YW	RADG	DMI	YH	SC	DOC
2	4.1	70	132	0.26	2.08	-0.1	1.12	22

HP	CEM	MILK	MW	MH	\$EN	CW	MARB	RE	FAT
13.1	0	17	93	-0.1	-29	51	-0.11	1.08	-0.003

\$M
54
\$W
56
\$F
90
\$G
24
\$B
114
\$C
202



## TAF SOLUTION 1607

DOB: 08/27/2016 REG: 18896892 TATTOO: 1607

MOGCK SURE SHOT  
**KG SOLUTION 0018**  
 KG RITO LADY 8724

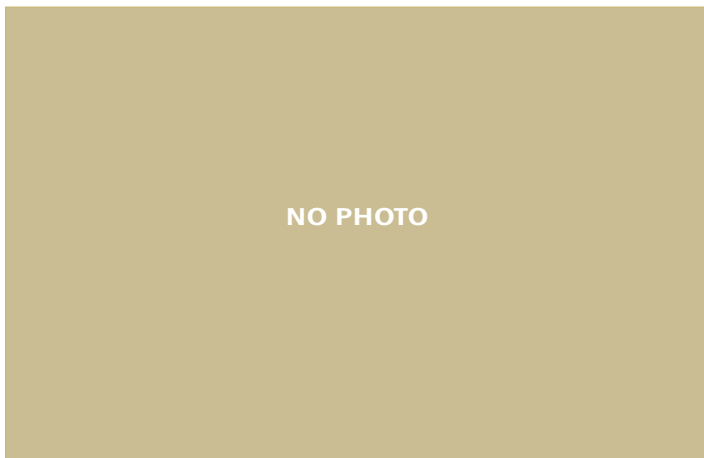
BOYD SIGNATURE 1014  
**TAF 1416-900**  
 TAF ROYAL LADY 900

MYTTY IN FOCUS  
 MOGCK BLACK LASS 2065  
 KG ONWARD 6221  
 KG RITO LADY 8187  
 KESSLERS FRONTMAN R001  
 BOYD ERICA DIANNA 9054  
 SAV NET WORTH 4200  
 MARANDS ROYAL LADY 4101

CED	BW	WW	YW	RADG	DMI	YH	SC	DOC
6	0.8	61	111	n/a	n/a	n/a	n/a	n/a

HP	CEM	MILK	MW	MH	\$EN	CW	MARB	RE	FAT
n/a	8	22	n/a	n/a	-11	n/a	n/a	n/a	n/a

\$M
63
\$W
56
\$F
89
\$G
n/a
\$B
n/a
\$C
n/a



## WHITESTONE 18-MILLION

DOB: 12/23/2016 REG: 1800000 BRAND: 7032

JINDRA 3<sup>RD</sup> DIMENSION  
**JINDRA ACCLAIM**  
 JINDRA BLACKBIRD LASSY 1111

CONNEALY BLACK GRANITE  
**WHITESTONE EVERELDA 5109**  
 WHITESTONE EVERELDA C059

JINDRA DOUBLE VISION  
 JINDRAS SAPPHIRE J 417  
 CONNEALY IMPRESSION  
 JINDRAS ENCHANTRESS J102  
 CONNEALY CONSENSUS 7229  
 EURA ELGA OF CONANGA 9109  
 MUSGRAVE FOUNDATION  
 WHITESTONE EVERELDA A179

CED	BW	WW	YW	RADG	DMI	YH	SC	DOC
4	2.3	80	146	0.36	1.01	1.0	0.44	18

HP	CEM	MILK	MW	MH	\$EN	CW	MARB	RE	FAT
7.5	14	34	130	1.0	-56	76	0.46	0.83	-0.045

\$M
33
\$W
82
\$F
134
\$G
51
\$B
185
\$C
273



## WOODHILL BLUEPRINT

DOB: 02/10/2017 REG: 18876777 BRAND: E60

CONNEALY CONFIDENCE 0100  
**CONNEALY CONFIDENCE PLUS**  
 ELBANNA OF CONANGA 1209

TEHAMA SIERRA CUT Z118  
**WOODHILL EVERGREEN Z291-B233**  
 WOODHILL EVERGREEN U6-Z291

CONNEALY TOBIN  
 BECKA GALA OF CONANGA 8281  
 CONNEALY CONSENSUS  
 ELBASTA OF CONANGA 9703  
 D R SIERRA CUT 7404  
 TEHAMA ECHO X315  
 SYDGEN C C & 7  
 WOODHILL EVERGREEN S28-U6

CED	BW	WW	YW	RADG	DMI	YH	SC	DOC
9	0.7	67	126	0.30	1.26	0	0.51	20

HP	CEM	MILK	MW	MH	\$EN	CW	MARB	RE	FAT
13.7	7	28	64	0.4	-21	49	0.70	1.07	0.007

\$M
72
\$W
72
\$F
100
\$G
59
\$B
159
\$C
278





# Interpreting the data

An Expected Progeny Difference (EPD) is a prediction of how future progeny of a sire or dam are expected to perform in various production and carcass traits which are measurable. EPDs are expressed in actual pounds, square inches or centimeters (depending on the trait), plus or minus what you can expect in the weights or measurements of progeny sired by a particular animal as compared with another animal.

**Calving Ease Direct (CED)** • is expressed as a difference in percentage of unassisted births, with a higher value indicating greater calving ease in first-calf heifers. It predicts the average difference in ease with which a sire's calves will be born when he is bred to first-calf heifers.

**Birth Weight EPD (BW)** • expressed in pounds, is a predictor of a sire's ability to transmit birth weight to his progeny compared to that of other sires.

**Weaning Weight EPD (WW)** • expressed in pounds, is a predictor of a sire's ability to transmit weaning growth to his progeny compared to that of other sires.

**Yearling Weight EPD (YW)** • expressed in pounds, is a predictor of a sire's ability to transmit yearling growth to his progeny compared to that of other sires.

**Residual Average Daily Gain (RADG)** • expressed in pounds per day, is a predictor of a sire's genetic ability for postweaning gain in future progeny compared to that of other sires, given a constant amount of feed consumed.

**Dry Matter Intake (DMI)** • expressed in pounds per day, is a predictor of difference transmitting ability for feed intake during the postweaning phase, compared to that of other sires.

**Yearling Height EPD (YH)** • is a predictor of a sire's ability to transmit yearling height, expressed in inches, compared to that of other sires.

**Scrotal Circumference EPD (SC)** • expressed in centimeters, is a predictor of the difference in transmitting ability for scrotal size compared to that of other sires.

**Docility (Doc)** • is expressed as a difference in yearling cattle temperament, with a higher value indicating more favorable docility. It predicts the average difference of progeny from a sire in comparison with another sire's calves. In herds where temperament problems are not an issue, this expected difference would not be realized.

**Heifer Pregnancy (HP)** • is a selection tool to increase the probability or chance of a sire's daughters becoming pregnant as first-calf heifers during a normal breeding season. A higher EPD is the more favorable direction and the EPD is reported in percentage units.

**Calving Ease Maternal (CEM)** • is expressed as a difference in percentage of unassisted births with a higher value indicating greater calving ease in first-calf daughters. It predicts the average ease with which a sire's daughters will calve as first-calf heifers when compared to daughters of other sires.

**Maternal Milk EPD (Milk)** • is a predictor of a sire's genetic merit for milk and mothering ability as expressed in his daughters compared to daughters of other sires. In other words, it is that part of a calf's weaning weight attributed to milk and mothering ability.

**Mature Weight EPD (MW)** • expressed in pounds, is a predictor of the difference in mature weight of daughters of a sire compared to the daughters of other sires.

**Mature Height EPD (MH)** • expressed in inches, is a predictor of the difference in mature height of a sire's daughters compared to daughters of other sires.

**Cow Energy Value (\$EN)** • expressed in dollar savings per cow per year, assesses differences in cow energy requirements as an expected dollar savings difference in daughters of sires. A larger value is more favorable when comparing two animals (more dollars saved on feed energy expenses). Components for computing the cow \$EN savings difference include lactation energy requirements and energy costs associated with differences in mature cow size.

**Carcass Weight EPD (CW)** • expressed in pounds is a predictor of the differences in hot carcass weight of a sire's progeny compared to progeny of other sires.

**Marbling EPD (Marb)** • expressed as a fraction of the difference in USDA marbling score of a sire's progeny compared to progeny of other sires.

**Ribeye Area EPD (RE)** • expressed in square inches, is a predictor of the difference in ribeye area of a sire's progeny compared to progeny of other sires.

**Fat Thickness EPD (Fat)** • expressed in inches, is a predictor of the differences in external fat thickness at the 12th rib (as measured between the 12th and 13th ribs) of a sire's progeny compared to progeny of other sires.

**Maternal Weaned Calf Value (\$M)** • an index, expressed in dollars per head, predicts profitability differences from conception to weaning with the underlying breeding objective assuming that individuals retain their own replacement females within herd and sell the rest of the cull female and all male progeny as feeder calves. The model assumes commercial producers will replace 25% of their breeding females in the first generation and 20% of their breeding females in each subsequent generation. Traits included are as follows: calving ease direct, calving ease maternal, weaning weight, milk, heifer pregnancy, docility, mature cow weight, claw set and foot angle.

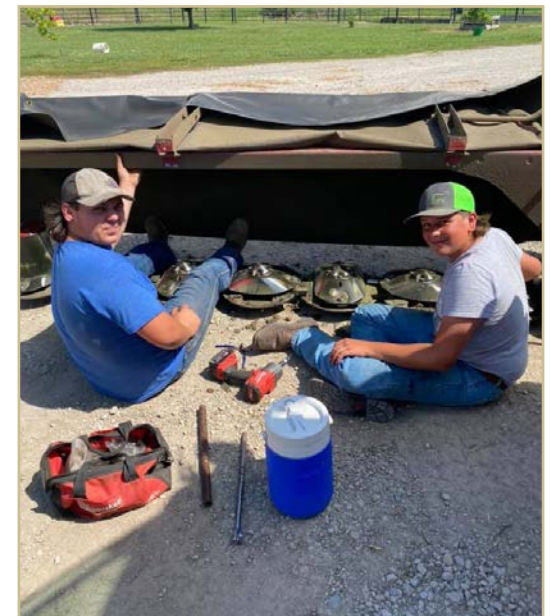
**Weaned Calf Value (\$W)** • an index, expressed in dollars per head, to predict profitability differences in progeny due to genetics from birth to weaning. The underlying objective being producers will retain 20% of the female progeny as replacements and sell the rest of the cull females and their male counterparts as feeder calves. Traits included are as follows (in no particular order): birth weight, weaning weight, milk, and mature cow weight.

**Feedlot Value (\$F)** • an index, expressed in dollars per head, to predict profitability differences in progeny due to genetics for postweaning feedlot merit compared to the progeny of other sires. The underlying objective assumes producers will retain ownership of cattle through the feedlot phase and sell fed cattle on a carcass weight basis, but with no consideration of premiums or discounts for quality and yield grade. Traits contributing directly to the index are as follows: yearling weight (gain), carcass weight and dry-matter intake.

**Grid Value (\$G)** • an index, expressed in dollars per carcass, to predict profitability differences in progeny due to genetics for carcass grid merit compared to progeny of other sires. The underlying objective assumes producers will market cattle on an above-industry-average carcass grid. Traits included in the index are as follows (in no particular order): carcass weight, marbling, ribeye area, and fat.

**Beef Value (\$B)** • a terminal index, expressed in dollars per carcass, to predict profitability differences in progeny due to genetics for postweaning and carcass traits. This terminal index assumes commercial producers wean all male and female progeny, retain ownership of these animals through the feedlot phase and market these animals on a carcass grid. Traits included in the index are as follows: yearling weight, dry-matter intake, marbling, carcass weight, ribeye area and fat.

**Combined Value (\$C)** • an index, expressed in dollars per head, which includes all traits that make up both Maternal Weaned Calf Value (\$M) and Beef Value (\$B) with the objective that commercial producers will replace 20% of their breeding females per year with replacement heifers retained within their own herd. The remaining cull heifer and steer progeny are then assumed to be sent to the feedlot where the producers retain ownership of those cattle and sell them on a quality-based carcass merit grid. Expected progeny differences (EPDs) directly influencing a combined index: calving ease direct (CED) and maternal (CEM), weaning weight (WW), yearling weight (YW), maternal milk (Milk), heifer pregnancy (HP), docility (DOC), mature cow weight (MW), foot angle (Angle), claw set (Claw), dry matter intake (DMI), marbling (Marb), carcass weight (CW), ribeye area (RE) and fat thickness (Fat).



A SINCERE  
*Thank You*  
FOR YOUR INTEREST IN OUR PROGRAM

# *Notes*

TALIAFERRO ANGUS FARMS & T-BAR-T ANGUS RANCH

4412 - 238TH ROAD

EFFINGHAM, KANSAS 66023

**TALIAFERRO ANGUS FARMS**  
**AND**  
**T-BAR-T ANGUS RANCH**

*14<sup>TH</sup> Annual Production Sale*

**SATURDAY** **NOVEMBER 13** **2021**

*TALIAFERRO ANGUS FARMS | EFFINGHAM, KANSAS*