

# FARM AUCTION

**Saturday • October 8, 2022 • 9:30 a.m.**

**\*\*\*AUCTION will begin @ 9:30 AM. We will go LIVE ONLINE @10:30 a.m. on EQUIPMENT. Visit [www.FloryAndAssociates.com](http://www.FloryAndAssociates.com) for online Equipment listing, Registration and Pictures.\*\*\***

**1245 N 550 Rd, Baldwin City, KS**

Directions from Lawrence: (From N650 exit, 1 mile South) South on Hwy 59 to N 650 Rd, West briefly to E 1250Rd, South to Auction Site.

## CONSIGNED BY BARBARA (AND THE LATE JIM) BUTELL:

- JD2520, 3pt, 540/1000 pto, 2 remotes, gas, 3444 hrs
- JD3520, dsl, hydro, 3pt, 540 pto, rear & mid remotes, 765 hrs
- 1964 Chevelle El Camino Malibu, V8, 3 speed on column, Protect-O-Top bed cover; mileage shows 64,161, Super Clean!
- 1977 C-20, V8, Auto, AC, 2wd, mileage shows 14,057 (rolled over), Clean!
- Polaris 200 Phoenix 4 wheeler
- Polaris 250 Trail Blazer 4 wheeler
- Schaben 3pt, 200 gal, 540 pto sprayer with broad jets
- Heavy Duty Shopbuilt trailer w/drop down tailgate, 16', single axle, electric winch



### FARM EQUIPMENT, TRAILERS & MISC

- 1998 Wilson grain trailer, 42', alum wheels, LP24.5 tires, spring ride
- JD 653 Low tin Corn head, pto drives, std rolls, good deck plates & chains
- JD 145 5-16" Semi Mount Plow
- JD 145 3-16" Semi Mount Plow
- JD 4-16" Plow, 3pt
- JD 3-16" Plow, 3pt
- JD #30 Plow, 1 bottom, Mdl# A0030
- JD 100 14' chisel, pull type
- JD 12' disc, pull type
- IH 16' wing disc, tandem, pull type
- JD Rotary Hoe, 15', 3pt
- Brillian Cultipacker Seeder, 8', double box, pull type
- 2015 7x12 Load Trail trailer, single axle
- 7X12 utility trailer, single axle, w/4' drop tailgate
- JD 3 section harrow with evener, 16', 3pt
- McCormick 100 Manure Spreader, ground driven
- Bush Hog rotary mower, 6', 3pt
- 8' pull type mower
- Work saver 3pt log splitter
- CM Aluminum truck box
- Clark 100 EN wire welder
- 3pt post hole digger w/12" bit
- Skid Steer Attachments (New): 48" pallet forks; Double spike bale fork; 72" grapple bucket; 72" tiller
- (2) new Firestone Implement tires: 265/85R15 (10.00-15)
- (2) 13.6-28 Turf tires on new JD 8 bolt rims
- Chain drag harrows, new hitch pins, hydraulic cylinder stops, other small amount of miscellaneous farm items.

### LIVESTOCK TRAILERS & EQUIPMENT

- Blair stock trailer, GN, 6x16, center cut gate, dbl axle
- 1984 Travalong stock trailer, bumper pull, 16', center gate
- Apache 24' towable Feeder Wagon, Mdl # WFW24A2
- (2) 7x16' hay wagons, one with NH gear
- Farmhand Feedmaster 820 Grinder Mixer, 540 pto, 2T
- Riverode Cattle chute with Palp cage, 11', split style side entry gates
- (2) L-H Creep feeders on wheels, 160 bushel cap
- (4) Bextra Round hay feeders | (1) light duty hay ring
- (3) Rectangle Double bale hay feeders - GoBob style
- (4) 20' Flat bottom silage bunks, 36" wide
- 18' electric hay elevator
- Pickup bed bale spear with electric winch
- (2) Propane stock tank heaters
- New 4' stock tank

### LIVESTOCK PANELS & GATES

- (4) 10' walk thru bow gate, HD, 2.375" sch 40 pipe
- (1) 4' walk thru bow gate, HD, 2.375" sch 40 pipe
- (1) 5' walk thru bow gate, HD, 2.375" sch 40 pipe
- (3) 10' walk thru bow gate, HD, 1.625" sch 40 pipe
- (5) 5' walk thru bow gate, HD, 1.625" sch 40 pipe
- (30) 10' pipe panels, HD, 1.3125" sch 40 pipe, 95# each
- (2) 9.5' walk thru bow gate w/10' frame, HD, 2.375" sch 40 pipe
- (10) Preifert (brown) 12' livestock panels w/6' walk-thru gate

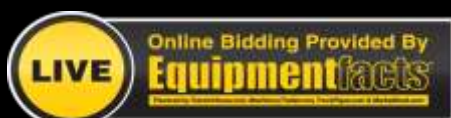
### GUNS, TOOLS & MISCELLANEOUS:

Remington Pre 64 Speedmaster Mdl 552 Semiauto .22 s,l,r, grooved receiver; Springfield Savage Arms Mdl 120A .22 s,l,r, grooved receiver; Rochester Precision pump .22 air rifle; JD140 riding lawn mower, nearly new engine overhaul; Craftsmen riding lawn mower, 46" deck; Heat Wagon Mdl HVF310 oil fired Torpedo heater; Stihl 041 Farm Boss chainsaw; Gas powered 2700 power washer; 24" auger bit; gas post hole digger; electric fencer; electric tiller; electric weedeater; electric lawn mower w/bagger; shop vac; car ramps; Westward 20pc 3/4 drive deep 6pt 5/8"x2" Impact socket set #45KG79 w/case; DeWalt DCF897 3/4" brushless 3spd Impact, 2 20V Batteries, charger & case; new name brand tools; concrete blankets; small amount of misc. hand & lawn tools.

**AUCTIONEERS NOTE:** Smaller auction w/minimal small items, be on time. To purchase guns: MUST be Kansas resident w/proper ID and ATF rules apply. See web for online equipment listing, auction terms, ect. Concessions offered by Worden Church Ladies!

## Seller: Douglas County Area Farmers

**VISIT US AT [FloryAndAssociates.com](http://FloryAndAssociates.com) or [KansasAuctions.Net](http://KansasAuctions.Net) for add'l Pictures!**



Online bidders must be pre-registered by 10/7/22 by noon to insure bidding approval. Visit [www.FloryAndAssociates.com](http://www.FloryAndAssociates.com) for online registration and Auction link. Should you have trouble registering, please contact Wendy Flory @ 785.979.2923.

**AUCTIONEERS:**  
Jason Flory 785.979.2183  
Mark Elston 785.218.7851

