

# AUCTION

**SATURDAY, SEPTEMBER 2, 2023 — 9:00 AM**

**2110 Harper, Dg. Fairgrounds, Bldg. 21 (Climate Controlled) LAWRENCE, KANSAS**



## VEHICLES, TRAILER, EQUIPMENT

2004 Ford F350 4x4 DRW Super Cab Lariat Truck, dually, Powerstroke V8 6.0L Power Turbo Diesel, 5 sp. auto, 4.10 axle, leather, loaded, camper/tow Pkg., tinted windows, running boards, **ONLY 41K! Always Inside! Very Nice!**; 2009 Honda Odyssey Van, auto, leather, loaded, 3.5i-VTEC VCM, 108K, w/Bruno Joey VSL-4000HW Handicap Scooter Lift; Pride Victory 10 Electric Handicap Scooter; **COLLECTOR CLASSIC CARS:** 1958 Chevrolet Belair 2 Door Hard Top Car, 305 V8 2 bbl carburetor, 350 Turbo auto transmission, electronic ignition, Tropical Aquamarine, Grey Cloth Interior, 79K Vin#F58K181654 **NICE!!**; 1958 Ford Fairlane 500 Skyliner 2 Door Car Ser#H8KW112565 Body Type 51A Color ED2, auto, ac, electric windows, Interceptor Special V8 (Jim & Barbara Bought New & Were Married In It!); 1981 Buick Century Regal Limited Car, 2 dr., auto, 70K; 1977 Hillsboro Brown Cargo Enclosed 8x36x7 High Gooseneck Trailer, electric winch, finished inside w/lights & electrical outlets, hvy duty fold down rear ramp door (Jim had Custom Made to haul his Collector Cars!); Cub Cadet Ultima ZT1 Zero Turn Hydrostat Mower, gas, 50 in. deck, 23 hp. Kawasaki, tow hitch, lights **ONLY 80 Hours Like**

New!; Fimco 25 gallon Lawn Trailer 12v Sprayer w/boom & hose/sprayer; Troy-Bilt Horse 8 hp. & Pony 4 hp. Rear-Tine Tillers; Mantis Row-Tiller; Honda Harmony HRM215 Self-Propel Push Mower; Ariens 6 hp. Mulch Push Mower; John Deere Gas Hedge Trimmer; shop power/hand tools.

## COLLECTIBLES, HOUSEHOLD, MISC.

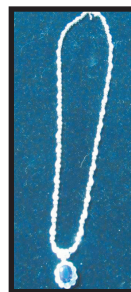
3 ft. concrete Native American Chief statue; "PIC" Germany #13907 fixed blade hunting knife w/stag handle & West Germany leather sheath; Buck 307 knife; WW II Helmet w/lip; Clint Eastwood Movie Prop BKA 98 Cap/Ball Replica 6 Shot Revolver; 1930s Manoil Barclay SIREN Armored Cars; Miner's sterling spoons; Big Eight Conference Clock; 1969 Orange Bowl Jayhawk Team Framed Wall Picture; Jayhawks/LHS/Elvis Memorabilia; **TOYS:** John Deere 8400 Pedal Tractor, Spec Cast AC Highly Detailed D-15 Tractor w/ loader, Precision AC Model WD-45 #13101, JD 50th Ann. 520-620 Series Tractors The 3 & 4 Plow Series, JD Model 60 Tractor High-Seat, JD 60 & JD 730 Tractors, JD 50 years Plow, Banthrico Car Coin Banks; 75th Ann. Kaw Valley Eudora/KSU Ottawa/First National Ottawa, 30+ Die Cast Vintage Collector Car/Trucks many w/boxes!; Kaw Valley Eudora Bank Thermometer; Dolls (Shirley

Temple/etc.); Danbury Mint Air Force One; Denin Days Collections; JD Danbury Mint Set; Harthorne: Budweiser Holiday Express Train Set/ Thomas Kinkade Wonderful Express Christmas Tree/Elvis Graceland; Tempus Fugit Mantle Clock; Lighted China Cabinet; Oak Dining Room Table/Chairs; Oak Claw Foot Round Dining Table w/ Chairs; Statton Parlor Table; Maple China Hutch; Oak Curved Glass & Sliding Door Curio Cabinets; Matching Double Recliner Electric Sofa & Manual Loveseat Recliners; Panasonic 54" Flat Screen TV; Area Rugs; Walnut Chest; Queen Bedroom Suite; Maple Full Bed; end tables; book shelves; Lazy Boy recliners; quilt racks; Retro-Vintage Cavalier Original Cedar Chest w/La-bels!; Continental Kilns Green Arbor Dish Set; Fenton/Carnival/Clear/ Many Other Glasswares; Brass Tiger; Oil Lamps; Houseware décor; linens/quilts; Terry Redland "Sharing Season I" framed picture; 1000K Rounds of 12/20 ga./45 mag/308 ammo; 2- Remington model 597 magnum magazines; vintage .22/45 ammo; full-size Ping Pong Table & accessories; **many items too numerous to mention!**

## JEWELRY & COINS

(9:00 A.M.)

18K Sapphire & Diamond Necklace; 10/14K Gold; Rings/ Necklaces/Bracelets; Sterling; Turquoise; Costume; \$20 & \$50 Confederate 1864 Bills; 400+ Vintage Silver Dollars/ Halves/Quarters/Dimes/Nickels; Silver Proof & Mint Coin Sets; Vintage Tube Dime Banks; **Complete Jewelry & Coin List on the Internet!**



**MANY ITEMS TOO NUMEROUS TO MENTION!**

**AUCTION NOTE:** Very Large Auction ... Highlights **ONLY!** 2 Auction Rings! Well-Maintained Clean Items.

**INSPECTION DAY OF AUCTION ONLY! Concessions:** Worden Church Ladies

**SELLERS: MRS. BARBARA "Jim" BUTELL & Private from Lawrence**

**TERMS:** Cash or approved checks, sorry no credit cards. ID required to register for a bid number. Bidding by number. Nothing removed until settled with the cashier. **Elston Auctions or Seller not responsible for accidents/damage or theft.** Statements made day of auction take precedence over all prior advertisements and printed material. Title transfers are the responsibility of the buyer and seller. Everything sold as is, where is, without any guarantee implied.

Due to Covid 19 we are taking precautions for the health and well-being of our Customers & Staff. Out of the abundance of caution and in accordance with local, state, federal guidance/recommendations in place please follow the social distancing while attending. We ask everyone to please do what is best for themselves & if in doubt, please stay home. Thanks for your patronage and cooperation in the New Normal of the Auction Industry!

**Please visit us online at [www.KansasAuctions.net/elston](http://www.KansasAuctions.net/elston) or [FloryAndAssociates.com](http://FloryAndAssociates.com) for 100+ Pictures!**

**Auctioneers: Mark Elston (785-218-7851) & Jason Flory (785-979-2183)**

**"Serving Your Auction Needs Since 1994"**